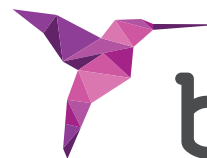


FRONT CUTTING DRILL



bti.

Human
Technology



Human Technology

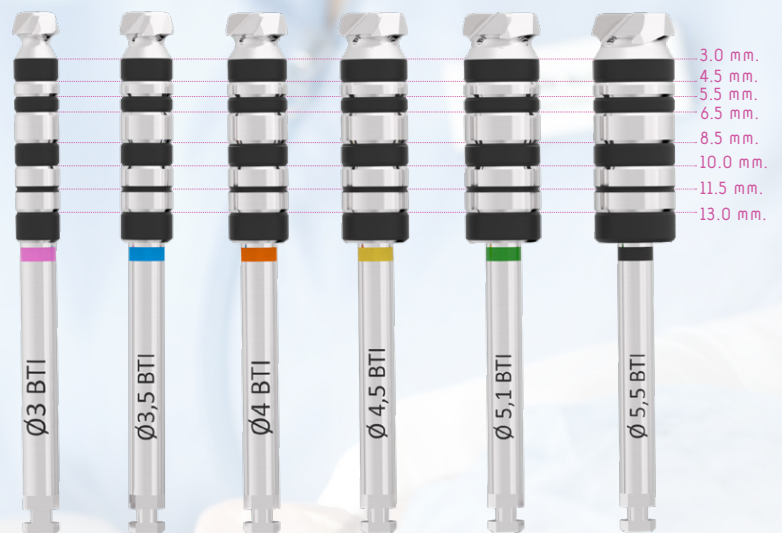
FRONT CUTTING DRILL

A CLINICAL DRILLING TECHNIQUE

The front cutting drill was designed to achieve maximum settlement for extrashort implants and to work on the cortical bone in transalveolar sinus elevations and in proximity to the dental nerve.

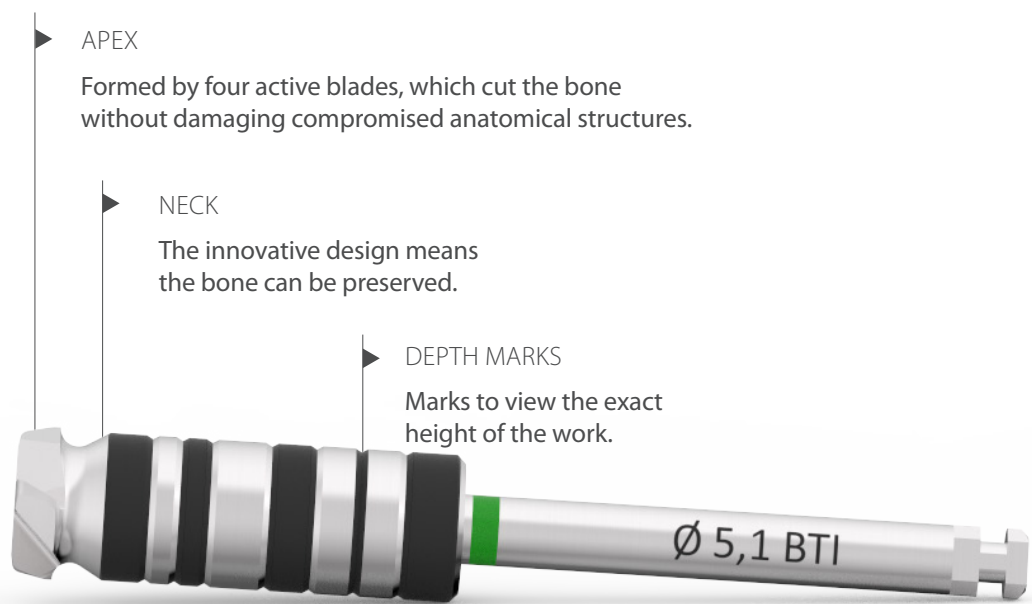
They come in six diameters to be used in the appropriate drilling procedure depending on the implant diameter. The different depth marks are useful to know the exact location of the drill in accordance with the height of the remaining bone.

AN EXCLUSIVE AND INNOVATIVE BTI DESIGN



AVAILABLE DRILLS

A CUTTING TOOL THAT DOES NOT DAMAGE ANATOMICAL STRUCTURES



APEX
Formed by four active blades, which cut the bone without damaging compromised anatomical structures.

NECK
The innovative design means the bone can be preserved.

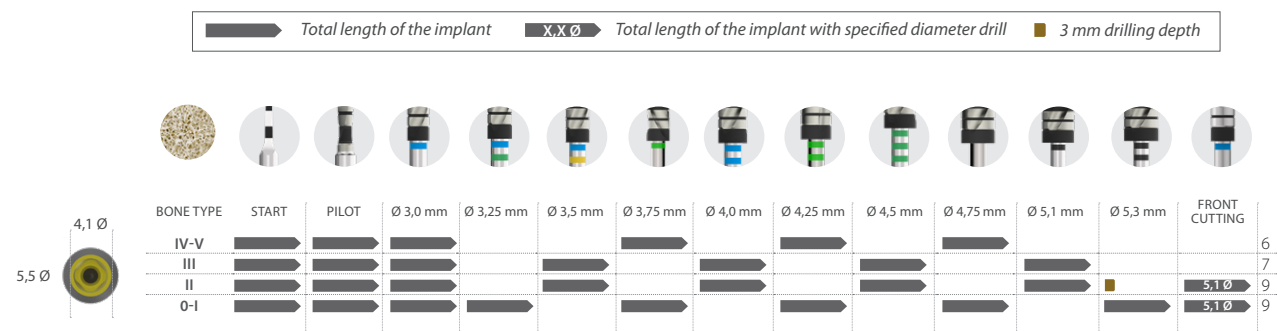
DEPTH MARKS
Marks to view the exact height of the work.

DRILLING PROCEDURE

These drills must be used when the appropriate alveolus for the diameter has been prepared, with apical instrumentation at the base of the sinus and/or allowing further advancement of the extrashort implant, achieving excellent primary stability and avoiding compression.

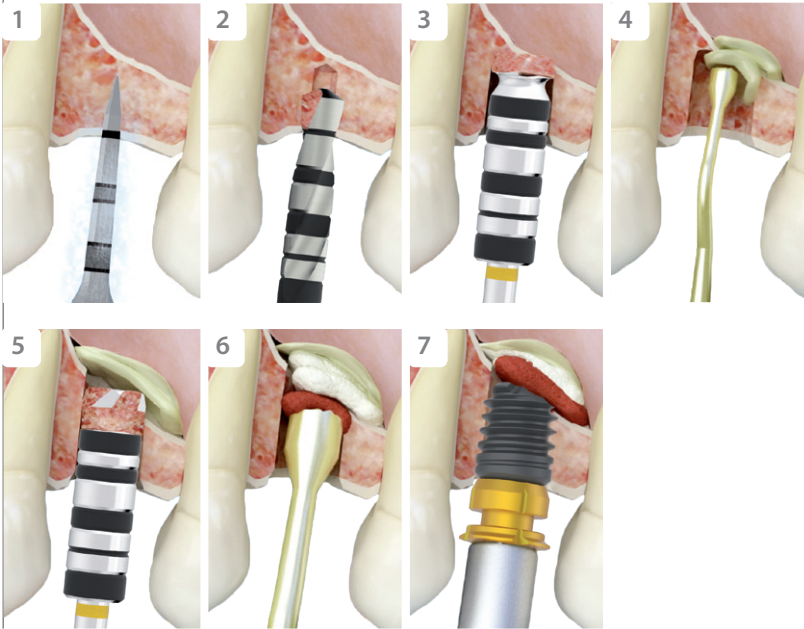
DRILLING SEQUENCE

5,5 mm Ø UNIVERSAL PLUS EXTRASHORT IMPLANT



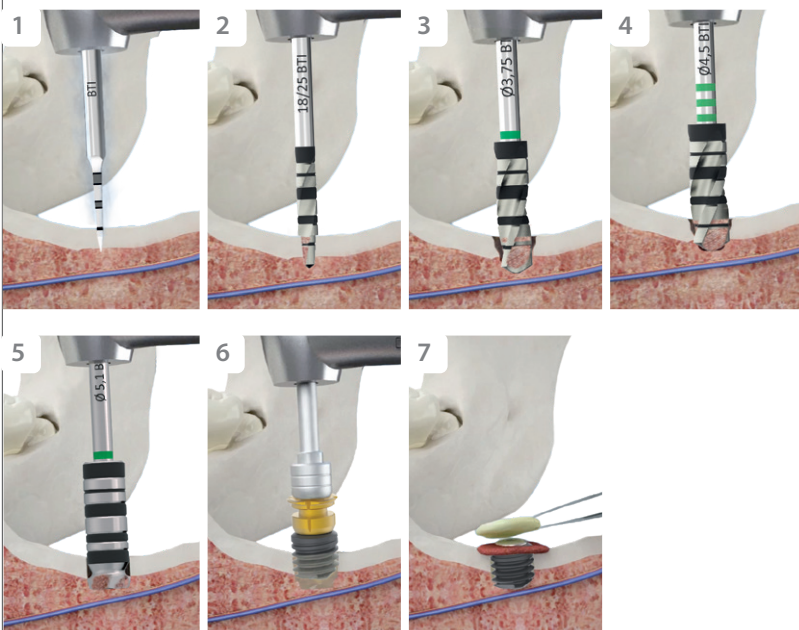
AN IDEAL BTI SOLUTION FOR COMPLICATED SURGERY

► TRANSALVEOLAR SINUS ELEVATION



1. Initial drill respecting a 1.5 mm safety margin.
2. The drilling diameter is increased in accordance with the choice of implant.
3. Front cutting drill, wearing down the sinus cortical bone to make a small hole to insert the graft material.
4. Insertion of a Endoret® (PRGF®) fibrin membrane inside the sinus using a bone compactor, before continuing to open the cortical bone in order to detach the Schneider membrane.
5. Complete opening of the crestal window using the drill, with no risk of damaging the sinus membrane.
6. Insertion of graft material (autologous and biomaterial) inside the sinus, until the desired diameter is achieved to insert implants.
7. Insertion of the implant in the prepared alveolus, supported on the sinus cortical and with the apex inside and surrounded by graft material.

► PLACEMENT OF SHORT IMPLANTS IN THE JAW



1. Initial drill respecting a 1.5 mm safety margin.
2. Drilling procedure to prepare the alveolus, to the same depth as the implant length.
3. The drilling procedure is continued, gradually increasing the diameter and length of the alveolus.
4. The last drill before the implant must have the right diameter to achieve primary stability, always avoiding compression.
5. Front cutting drill, working in the apical area of the alveolus to achieve implant settlement without compression at that level. Sometimes it is necessary to work on the upper cortical bone of the canal.
6. Insertion of the implant in the socket irrigated with PRGF®-Endoret®, to the desired level.
7. Supracrestal implant in two surgical phases covered with graft material + Endoret® (PRGF®) to generate vertical growth around it.



COMPETITIVE ADVANTAGES

COLLECTION OF AUTOLOGOUS BONE



The detached bone particles from the drilling build up in the spaces between the cutting blades and are displaced to the retention zone.

THE BEST INSTRUMENT TO AVOID COMPROMISED SURGERY

These drills allow transalveolar sinus elevation via a minimally invasive technique.

They allow extrashort implants to be placed near the dental nerve with excellent control, reducing the risk of damaging it.



bti®

Biotechnology
Institute
Human Technology



BTI Comercial

San Antonio, 15 · 5º
01005 Vitoria-Gasteiz
(Álava) · SPAIN
Tel: +34 945 140 024
Fax: +34 945 135 203
pedidos@bticomercial.com

B.T.I.

Biotechnology Institute S.L.
Parque Tecnológico de Álava
Leonardo da Vinci, 14
01510 Miñano (Álava) SPAIN
bti.implantes@bti-implant.es

Subsidiaries

GERMANY

Tel. +49 (0) 7231 42806-0
Fax +49 (0) 7231 42806-15
info@bti-implant.de

FRANCE

Tel: (33) 556 18 11 18
info@bti-implant.fr

ITALY

Tel.: (39) 0270605067
info@bti-implant.it

MEXICO

Tel: (52) 55 52502964
Fax: (52) 55 55319327
bti.mexico@bti-implant.com

PORTUGAL

Tel: (351) 22 120 1373
Fax: (351) 22 120 1311
bti.portugal@bticomercial.com

UK

Tel: +44 (0) 2039 661873
customerservice@bti-implant.co.uk

USA

Cell: 610 209 6040
Office: 866 646 4067
info@bti-implant.us

www.bti-biotechnologyinstitute.com

NOTE: consult your distributor for the availability of the product in the different markets.



BTI APP
NEW PRODUCTS

iPhone / smartphone version
iPad / Tablets version (**Customer Area**)